



五行

***Wu Xing ~ Five Elements***

**Jyoti Duwadi**







*Stupa for Hong Kong*, 2011, terracotta and ceramic vessels, bamboo baskets, beeswax, red earth, manila rope, rudraksha seeds, singing bowl, mallet, orchid, sand, 63 x 24 x 24 in.

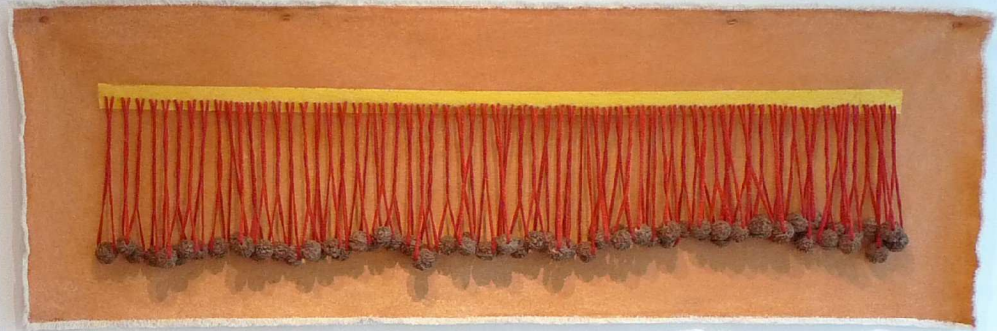
*Calligraphic Landscape*, 2011, earth pigments, turmeric, and gum arabic on canvas, 35 x 71 in.

*Improv 1 & 2*, 2011, earth pigments, turmeric, and gum arabic on canvas, 71 x 18 in.





Arto Elomaa  
Rudraksha 2011  
Rudraksha seeds, thread, earth pigments,  
turmeric, and gum arabic on canvas  
12 x 35 in.



## 五行

Wu Xing ~ Five Elements  
a Site Specific Installation

Sundaram Tagore Gallery - Hong Kong  
January 5 - February 5, 2012

*Arrow of Time*, 2011, earth pigments, turmeric, and gum arabic on canvas, 71 x 29 in.

*Rudraksha*, 2011, rudraksha seeds, thread, earth pigments, turmeric, and gum arabic on canvas, 12 x 35 in.



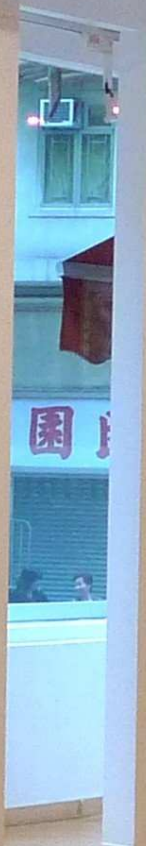
*Wu Xing: Five Elements* is a site-specific, multimedia installation where nature and culture merge. It interweaves drawings and paintings using earth pigments, turmeric, and gum arabic with sculptures made from beeswax. The exhibition is inspired by the advent of the Year of the Dragon, the dynamism of Hong Kong, and the architecture of the gallery space.

Jyoti Duvadi interprets the traditional Chinese elements—earth, water, fire, metal, and wood—which represent the fundamental forms of energy. The exhibition offers a multi-sensory experience of smell, sound, and touch with natural materials and functional objects such as bamboo baskets and vessels from Hong Kong and Nepal.

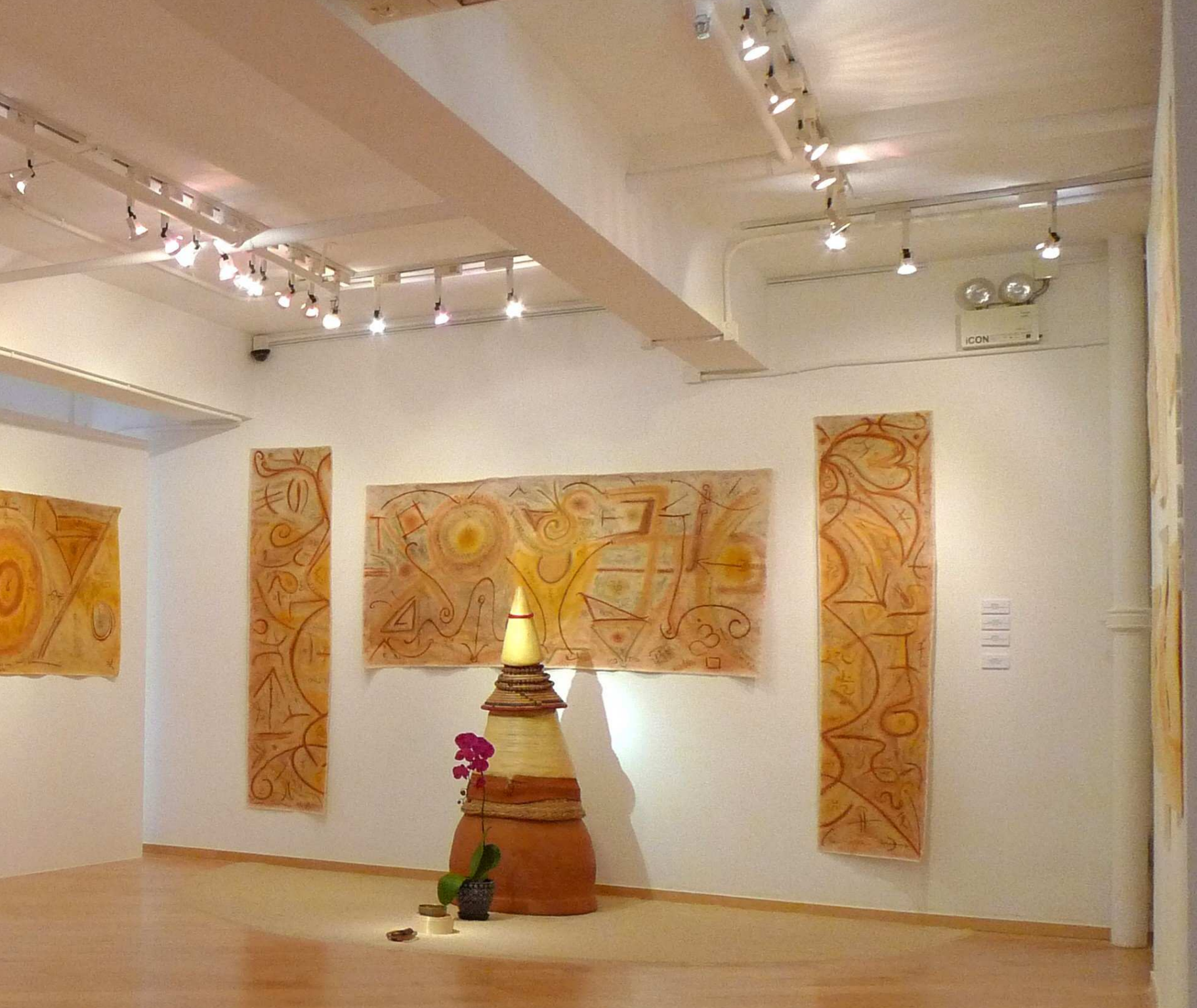


*Elements*, 2012, ceramic vessels, wooden bowl, lit copper oil lamp, incense, water, earth, sprouted barley, coral, flowers, and bamboo, 30 x 48 x 48 in.













Left wall: six drawings on Nepali paper 2011; Back wall: *Sky*, 2011, *Water*, 2011, *Earth*, 2011  
Floor: *Elements*, 2012; Right wall: *Toucharoma*, 2011; *Seed*, 2011; *Namlo*, 2011; *Wu Xing: Five Elements*, 2011





Installation view - back wall, left to right: *Toucharoma*, 2011, earth pigments, turmeric, and gum arabic on canvas, 33 x 71 in.

*Seed*, 2011, earth pigments, turmeric, beeswax, thread, rock, and gum arabic on canvas, 71 x 18 in.

*Namlo*, 2011, earth pigments, turmeric, namlo strap, rock, and gum arabic on canvas, 71 x 23 in.

*Wu Xing: Five Elements*, 2011, earth pigments, turmeric, beeswax, driftwood, earth, coin, burnt incense, glass, water, sisal twine, thread, and gum arabic on canvas, 71 x 23 in.; *Harmony*, 2011, earth pigments, shilajit, turmeric, and gum arabic on canvas, 33 x 71 in.



Left wall, top to bottom: *Sky*, 2011, earth pigments, turmeric, and gum arabic on canvas, 10 x 71 in.

*Water*, 2011, earth pigments, turmeric, and gum arabic on canvas, 33 x 71 in.

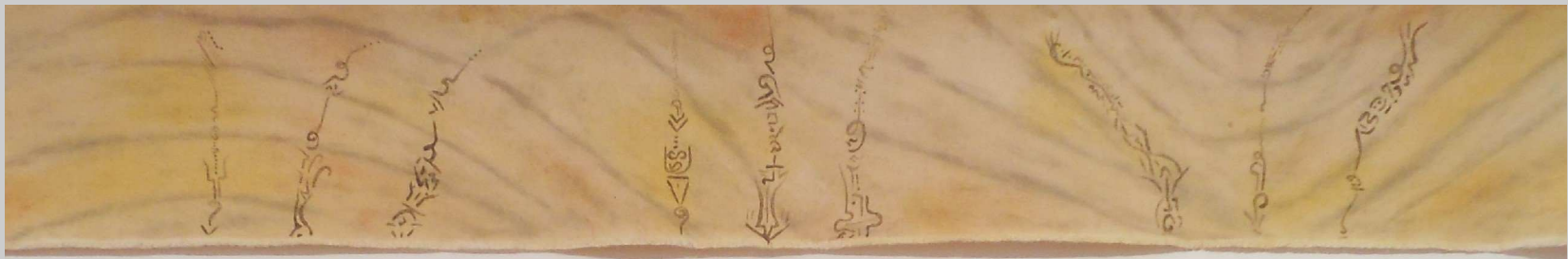
*Earth*, 2011, earth pigments, turmeric, and gum arabic on canvas, 10 x 71 in.

Floor: *Elements*, 2012, ceramic vessels, wooden bowl, lit copper oil lamp, incense, water, earth, sprouted barley, coral, flowers, and bamboo, 30 x 48 x 48 in.

Back wall, left to right: *Toucharoma*, 2011; *Seed*, 2011; *Namlo*, 2011; *Wu Xing: Five Elements*, 2011

Opposite page: *Sky*, 2011; *Water*, 2011; *Earth*, 2011







The variety of techniques and media in this installation reflects ideas of balance and transformation. Improvisational forms, primal colors, and an array of textures foster an environment for contemplating peace and the harmony of body and mind.



Top: Detail of *Seed*, 2011  
Right: Detail of *Namlo*, 2011







*Toucharoma*, 2011

“The five elements — earth, fire, water, metal, and wood — are each powerful artistic subjects in their own right. Here, in *Wu Xing: Five Elements*, Duwadi brings them together to form an expressive and coherent whole that engages the mind on physical, aesthetic, cultural, sculptural, and painterly levels separately and as one entity.”

Ian Findlay  
Exhibition Review  
*Asian Art News* Volume 22, Number One, January/February, 2012



*Namlo, 2011*

*Wu Xing: Five Elements, 2011*

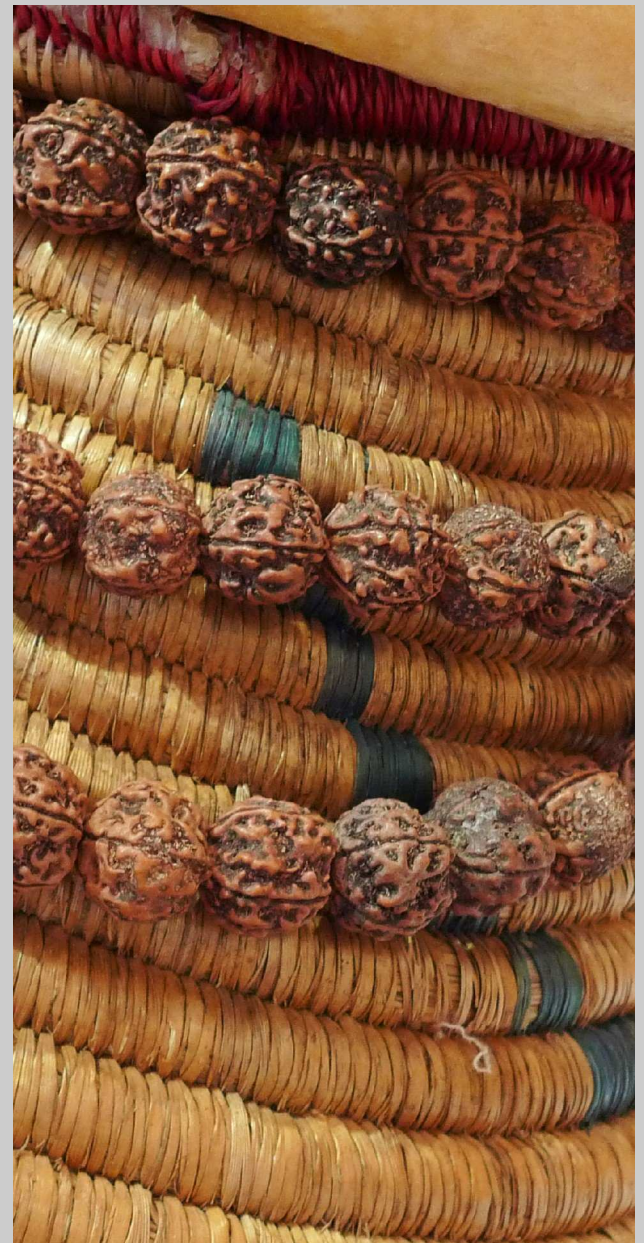
“Wu Xing: Five Elements is a thoroughly engaging and thoughtful work in which each element of the collective has been carefully worked out. The individual pieces invite one to ponder on the origins of the content, while the installation as a whole invites one to be still and to contemplate.”

Ian Findlay



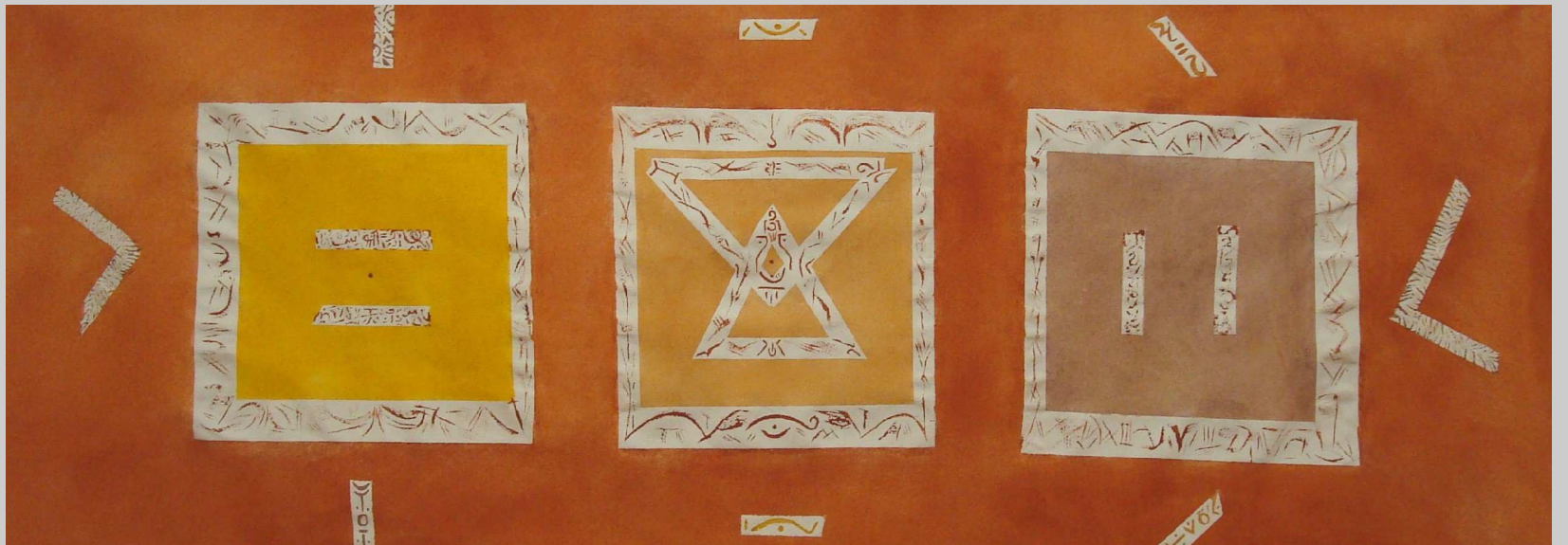


Visitor striking the singing bowl



Detail: Stupa for Hong Kong, 2011

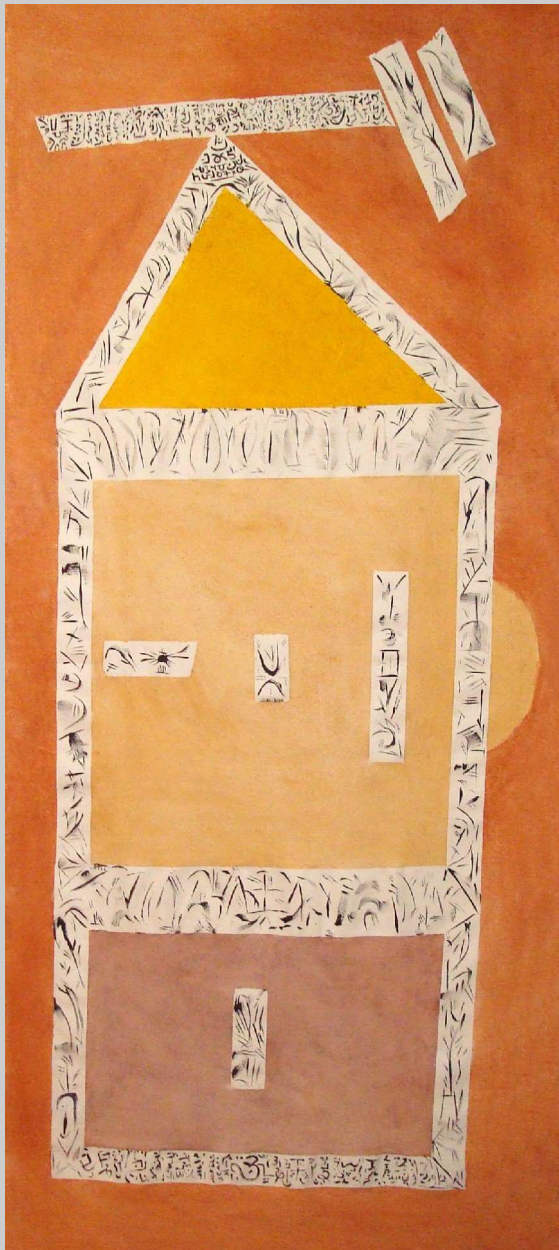




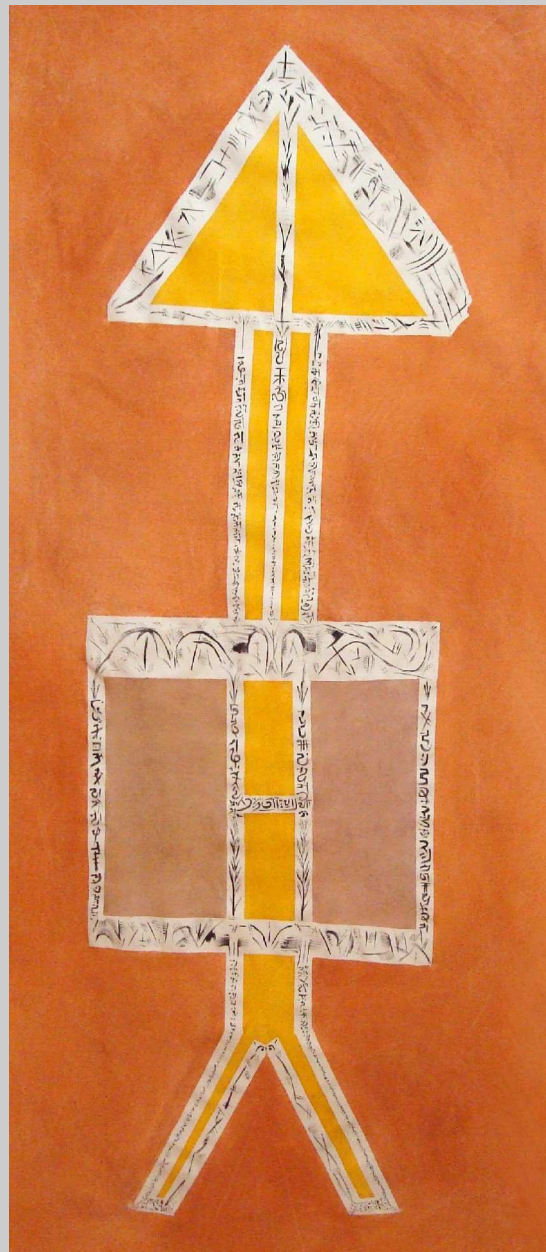
Top: *Yantra*, 2011, earth pigments, turmeric, and gum arabic on canvas, 28 x 70 in.

Bottom: *Triad*, 2011, earth pigments, shilajit, turmeric, and gum arabic on canvas, 28 x 70 in.



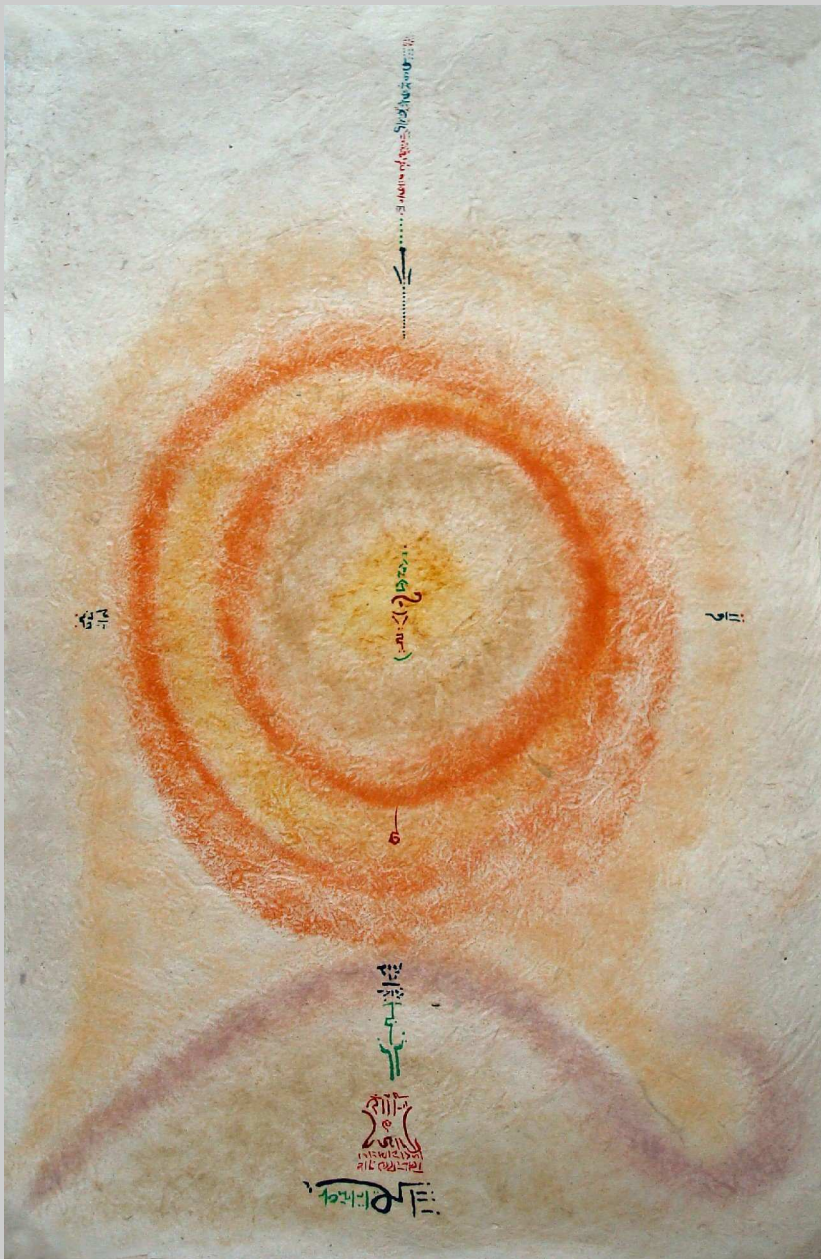


Left: *STG-HK*, 2011, earth pigments, turmeric, and gum arabic on canvas, 71 x 29 in.



Right: *Arrow of Time*, 2011, earth pigments, turmeric, and gum arabic on canvas, 71 x 29 in.





Circle, 2011, earth pigments and ink on Nepali paper, 30 x 20 in.

Studio view with earth pigments, Bellingham, WA, November 2011







Top row, left to right: *Cavern, Ganesh, Stupa*, 2011, earth pigments and ink on Nepali paper, 20 x 30 in.

Bottom row, left to right: *Square, Circle, Triangle*, 2011, earth pigments and ink on Nepali paper, 20 x 30 in.





Making the *Stupa for Hong Kong*: construction of crown and base with baskets, manila rope, twine, thread, T-shirts, beeswax, and red earth

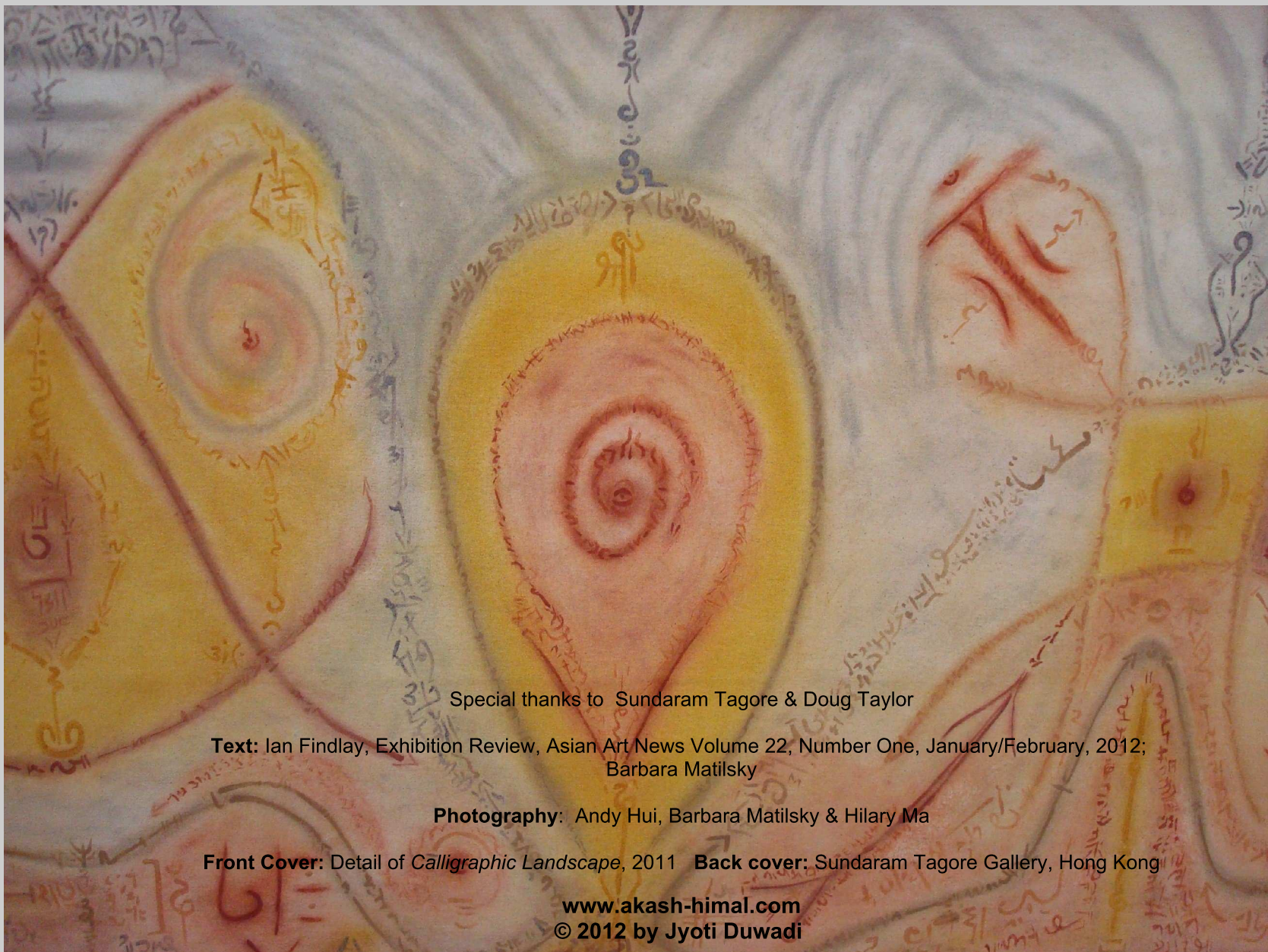


Studio view: *Stupa for Hong Kong*, 2011

The rectangular paintings that make up the installation are covered with a wide range of flowing lines. These lines and the forms that they make are suggestive of natural energy and balance. Indeed one might view them together as the strange notation of a natural symphony in which both action and contemplation are key ingredients.”

Ian Findlay





Special thanks to Sundaram Tagore & Doug Taylor

**Text:** Ian Findlay, Exhibition Review, Asian Art News Volume 22, Number One, January/February, 2012;  
Barbara Matilsky

**Photography:** Andy Hui, Barbara Matilsky & Hilary Ma

**Front Cover:** Detail of *Calligraphic Landscape*, 2011 **Back cover:** Sundaram Tagore Gallery, Hong Kong

[www.akash-himal.com](http://www.akash-himal.com)  
© 2012 by Jyoti Duwadi









LEE ROY  
COMMERCIAL BUILDING  
利來商業大廈

57-59



sundaram tagore gallery

NEW YORK • BEVERLY HILLS • HONG KONG

57-59

